



Neon Diamond Cowl

A textured colorwork cowl worked in the round
By Leigh McDonna

Materials

Yarn

Approximately 680 yards of DK weight yarn (*Photographed cowl is made out of 6 skeins of Koigu's Kersti Merino Crepe, 3 skeins of MC, and 1 skein each of three CCs.*)

Waste Yarn for provisional cast-on

Tools

Needles

Two (2) 16" US 6 (4.00mm) circular needles

Crochet hook (optional for provisional cast on)

Stitch Marker

Yarn Needle

Gauge

On 4mm needles 6 sts and 6 rows to 1 inch over colourwork pattern worked in the round.

Finished Dimensions

32" in length and 8" in width.

Required Skills

Provisional cast on

Knitting in the round

Stranded Knitting

Kitchener Stitch

Construction

The Neon Diamond cowl is knitted in the round as a tube, twisted, and then fastened together using kitchener stitch.

Instructions

Cast On

Using waste yarn, provisionally cast on 96 stitches using your preferred provisional cast on method. Join for working in the round, being careful not to twist the stitches around your needle. Place a marker to mark beginning of round. Using MC, knit 1 row.

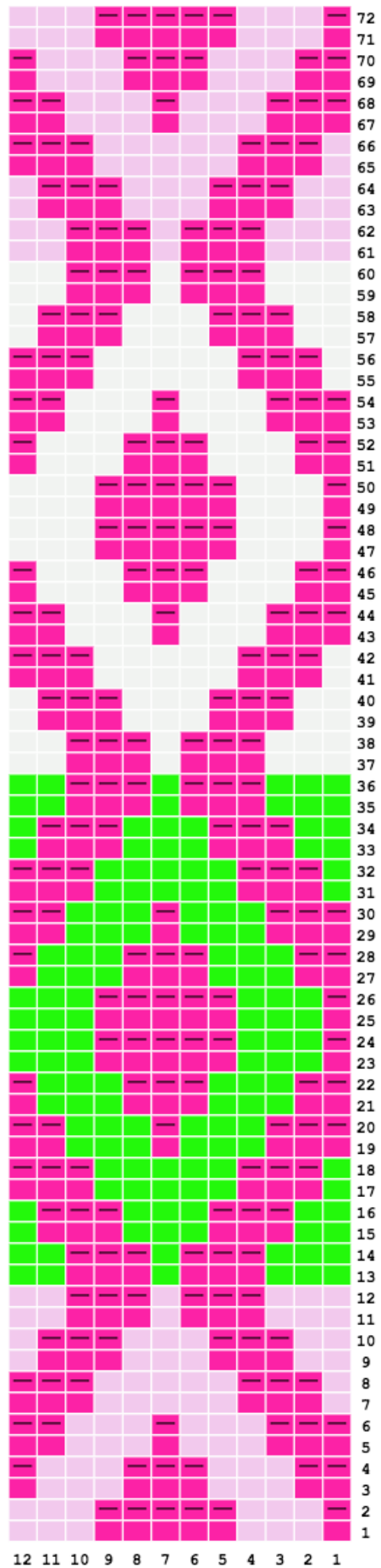
Cowl

Using MC and CC1, work Neon Diamond Chart a total of 3 times, making sure to change to CC2 and CC3 where chart indicates. The chart will repeat 8 times every round. *When working even numbered rows, remember to place MC back behind work after working the purl stitches, to avoid having bars across the front of your work.*

Twist and Close

After completing the entire Neon Diamond Chart 3 times, remove marker and slip 48 stitches purlwise. Do not bind off. Weave in all ends. Using another set of the same size circular needles, place held stitches from your provisional cast on onto the second set of needles. Lay cowl out flat and twist the fabric once from right to left. Bring the two ends together, lining up the two sets of needles (*slipping the stitches earlier ensures that you will be able to work kitchener stitch once the twist has been added.*) Using MC, work kitchener stitch to close the tube. Weave in the remaining thread.

- Knit CC3
- Knit CC2
- Knit CC1
- Knit MC
- Purl MC



Photography by S. Leigh McDonald
 Chart created using www.chart-minder.com
 This pattern is designed for personal and educational use only. All contents are subject to copyright.